



GAT MONTHLY MEMBERSHIP PROGRESS REPORT

Results as of: 4/30/2023

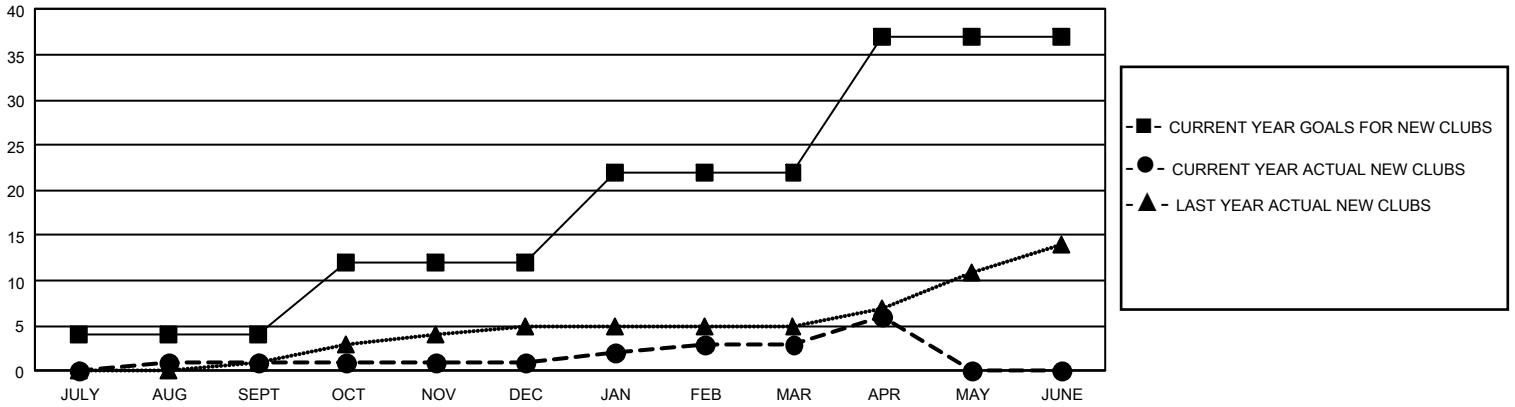
GMT Constitutional Area 4, Group D

REPORT DOES NOT INCLUDE CLUBS IN UNDISTRICTED AREAS.

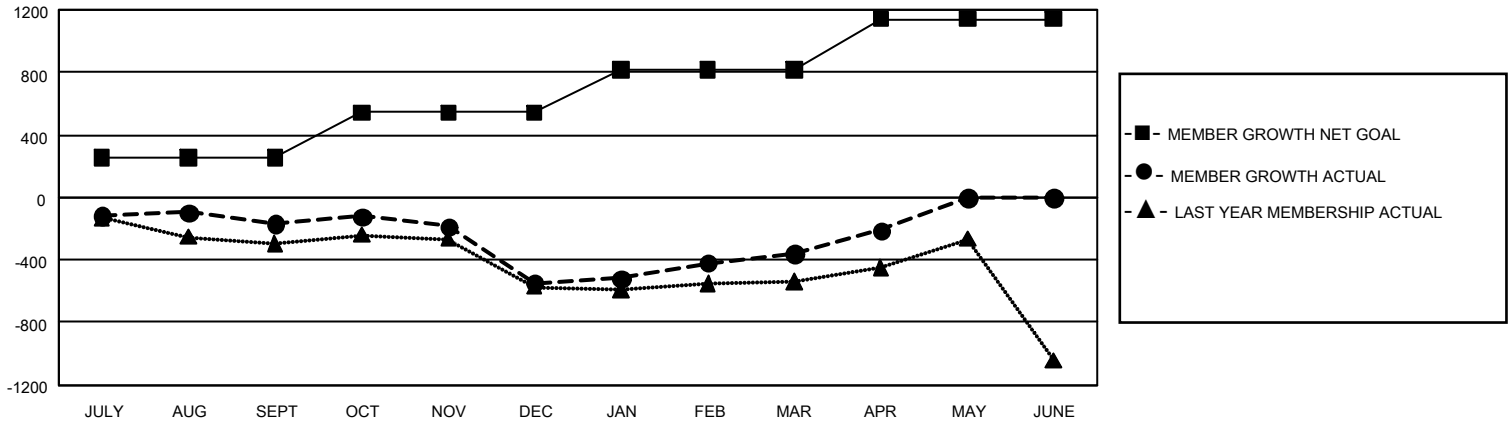
| Clubs | | | |
|-----------------------|---------------|-----------|---------------|
| RESULTS FOR 2022-2023 | | | |
| QUARTER | NEW CLUB GOAL | NEW CLUBS | DROPPED CLUBS |
| JULY/AUG/SEPT | 12 | 1 | 15 |
| OCT/NOV/DEC | 24 | 0 | 11 |
| JAN/FEB/MAR | 30 | 2 | 8 |
| APR/MAY/JUNE | 45 | 3 | 0 |

| Members | | | |
|-----------------------|------------------------|----------------------|--|
| RESULTS FOR 2022-2023 | | | |
| QUARTER | MEMBER GROWTH NET GOAL | MEMBER GROWTH ACTUAL | DROPPED MEMBERS ACTUAL (including transfers) |
| JULY/AUG/SEPT | 256 | 453 | 547 |
| OCT/NOV/DEC | 286 | 563 | 882 |
| JAN/FEB/MAR | 276 | 798 | 510 |
| APR/MAY/JUNE | 324 | 353 | 177 |

GOALS AND ACTUAL NEW CLUBS CUMULATIVE



GOALS AND ACTUAL MEMBERS CUMULATIVE



| | | | |
|---|--|---|---------------------------------------|
| DROPPED CLUBS: 34 | 692 CLUBS OF 1,403 ADDED 1 OR MORE NEW MEMBERS | <u>GENDER DISTRIBUTION</u> | |
| | | MALE 19,386 (68.64%) FEMALE 8,852 (31.34%) NON BINARY 1 (0.00%) PREFER NOT TO ANSWER 5 (0.02%) | |
| <u>DROPPED MEMBERS</u> | | CLICK HERE FOR CUMULATIVE MEMBERSHIP DATA | TOTAL FAMILY UNIT MEMBERS 2,724 |
| DECEASED 263 CLUB CANCELLED 112 OTHER 1,740 TOTAL 2,115 | | | FAMILY MEMBERS PAYING HALF DUES 1,403 |